

# Streaming Media for Classes

## A Public Service Announcement and Call to Action

Presentation to the PSU Faculty Senate  
by the Library Committee  
March 7, 2022

# What is Streaming Media?

“Streaming media is multimedia that is delivered and consumed in a continuous manner from a source, with little or no intermediate storage in network elements. Streaming refers to the delivery method of content, rather than the content itself.”  
(Wikipedia)



Examples of streaming media platforms

It's not:

Films watched via DVD, VHS, Blu-Ray and other fixed storage available to the end-user (end-watcher)



# Why are we concerned?

Streaming media usage for classes is increasing, which increases costs to students and the Library.

**The library budget cannot accommodate the demand for streaming media.**

## Students

- Subscriptions to commercial streaming media services (Netflix, Hulu, Amazon Prime) comes out of their personal budget
- Subscriptions subject students to commercial tracking and surveillance

## Library

- Reduced budget does not cover usage
- The cost and use of streaming media increases each year
- **Even with unlimited funds, not all materials would be accessible to the library**

TAKEAWAY: Take responsibility for the films, their location, and the impact on students

# Richard's Story


Course: PHE 351u Film and Health (4 cr.)



- Over time, has satisfied 5 different UNST clusters
- Historically, high enrollments (n~35-135)
- Historically, films provided by Dept (DVD) and viewed in class





Be aware of burden to students

- ❖ Eliminate textbook – assign and post specific readings
- ❖ Review availability of films, e.g., (n=9) all on Amazon Prime (est. cost \$35)
- ❖ Assure students that all films are held by one source
  - Cost is comparable to a textbook
  - Aware of subscription side effects – data gathering, time cost to sign up and cancel
  - Apologise that agent of state institution is directing private sector consumption - COVID

# Students seek low-cost/no-cost streaming resources

 Account  
 Dashboard

 Courses  
 Calendar

 Inbox  
 History  
 Commons  
 Help


[☰](#) [PHE-351U-001 Winter 2022](#) > [Discussions](#) > [Free Film Sources](#)

6d Student View

Winter 2022

[Home](#)  
[Announcements](#)  
[Modules](#)  
[Discussions](#)  
[Assignments](#)  
[Quizzes](#)  
[Grades](#)  
[Zoom](#)  
[Syllabus](#)  
[Rubrics](#)  
[Pages](#)  
[Files](#)  
[Outcomes](#)  
[Collaborations](#)  
[People](#)  
[Library Resources](#)  
[Settings](#)

✔ Published ✎ Edit ⋮


 **Free Film Sources**  
 All Sections

Jan 3 at 7:43pm  
1 1

- WK 1 - John Q - Tubi
- WK 4 - The Knick Ep 1.1+1.2 - Ep 1.1 free on Roku; both via Cinemax free trial (through Roku or Amazon Prime), Hulu free trial
- WK 5 - Contagion - Roku
- WK 7 - Godzilla/Gojira - Roku
- WK 8 - El Norte - Pluto
- WK 9 - Beasts of the Southern Wild - Amazon Prime
- WK 10 - Supersize Me - YouTube, Tubi, Crackle, Pluto, Vudu, Prime

Unread 👁 ⬆ ⬇

✓ Subscribe

 **[Redacted]**  
 Jan 10, 2022  
 Thank you so much for this [Redacted]

TAKEAWAY: Help students locate the films

# Carrie's Story

**Course:** GER 410 or 399 - Intro. to German Film;  
German Horror Film; Photography and Film, etc.

- Mindful selection of films on syllabus
  - Is the film available? Useful sites include: [Just Watch](#), [Reel Good](#); [PSU Finding Films Guide](#); work with Liaisons
  - Consider the potential cost to students
- Create a spreadsheet to help determine overall impact.



Title	Prof. DVD	PSU Library	Kanopy PDX/MC <a href="#">Lib Card</a>	YouTube	Netflix	Amazon	Hulu
<i>Nosferatu</i> Murnau/1922	Yes	Online & DVD	MC	<a href="#">Yes</a> Free	--	<a href="#">Yes</a> \$1.99	--
<i>Rammbock</i> Kren/ 2010	--	--	--	<a href="#">Yes</a> \$3.99	--	--	--

# Call to Action!

## PSU Administration

- Help with the Library budget

## Faculty

- Alert other faculty to these issues
- Work with Library Liaisons to plan curriculum
- Be aware that costs and availability are continuously changing
- Use alternative, low-cost or no-cost sources if available
- Both cost and availability are important – clarify
- Watch for effect on students, requiring purchasing Netflix, etc.

# Resources

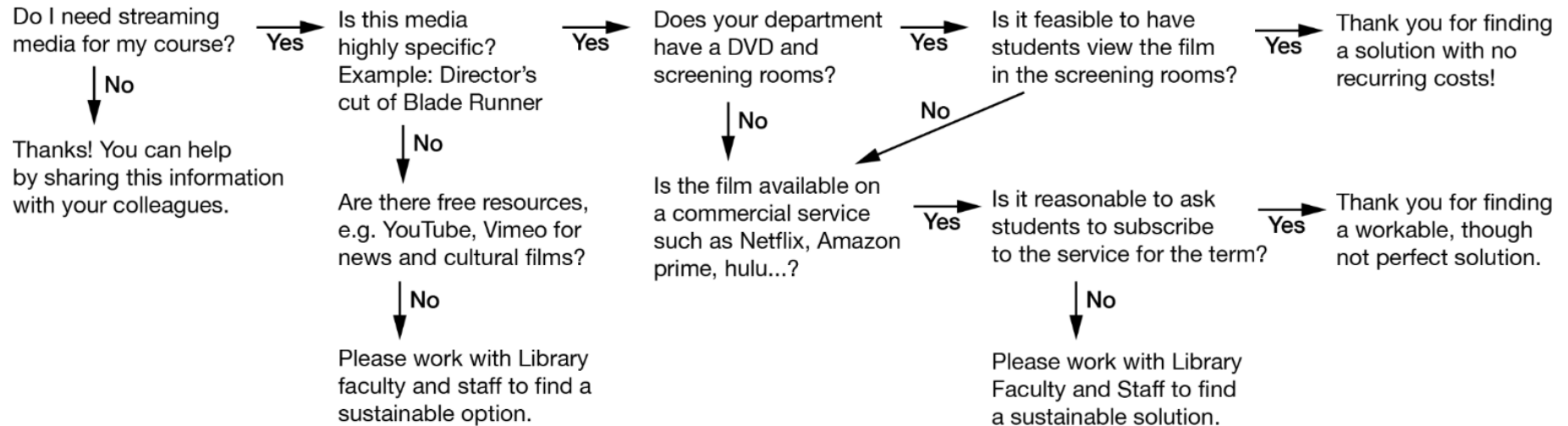
- Table of options (next slides)
- Decision tree (next slides)
- Links/handout for library resources
  - Library guide to using films in courses: <https://guides.library.pdx.edu/usingfilm>
- Use Kanopy through the Multnomah County Public Library
  - Direct students to get a county library card: <https://multcolib.org/get-library-card>



# Pros and Cons of Streaming Media Options

Option	Pros	Cons
PSU Library streaming subscription services (Academic Video Online, Films on Demand, Docuseek, Kanopy, etc)	Free to students	Limited availability
Free streaming resources (YouTube, Vimeo, etc)	Free to students	Limited availability
Commercial services (Amazon, Netflix, Hulu, etc)	Wide availability of films	Incurs costs to students
View film via DVD in screening room	Can get exactly the film you want. Guarantees student engagement	Logistically can be difficult
Kanopy through Multnomah County Library	Free to students (5 films per month)	Students need to <a href="#">get a library card</a>

# Sample decision process for using streaming media



Not all cases are covered here!

[Click here to get a copy of this image](#)